

## How to Measure Stripes Throw Pillow

### Measurement Instruction

- ✓ Give exact measurement from edge to edge.
- ✓ We add 0 to -2.5 cm size variance on the given width/depth for perfect fit.
- ✓ The height dimensions will remain same as provided by you.

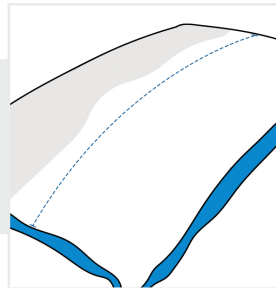


### Measurement (cm)

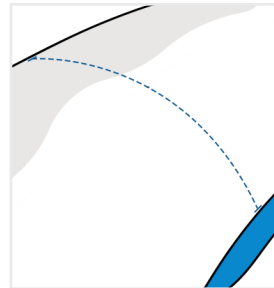
1. Width

2. Length

**1. Width:**  
Width of the Rectangle Throw Pillow



**2. Length:**  
Length of the Rectangle Throw Pillow



We encourage you to upload the image of the article you need the cover for - this helps our team ensure covers are designed keeping your requirements in mind.