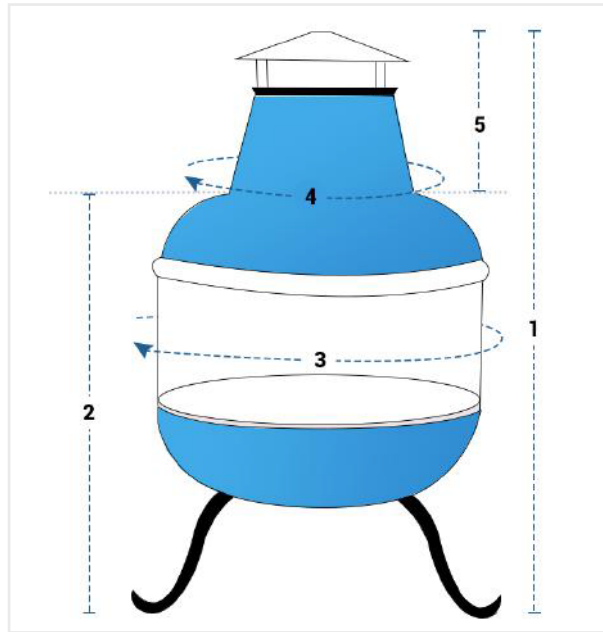


# How to Measure Custom Chimney Cover - Design 7

## Measurement Instruction

- ✓ Give exact measurement from edge to edge.
- ✓ We add 2.5 to 5 cm leeway on the given width/depth for easy pull-in and pull-out.
- ✓ The height dimensions will remain same as provided by you.



### Measurement (cm)

1. Height

3. Heat Chamber Circumference

5. Height of Chimney Pipe

2. Height till Chimney Pipe Bottom

4. Chimney Pipe Lower Circumference

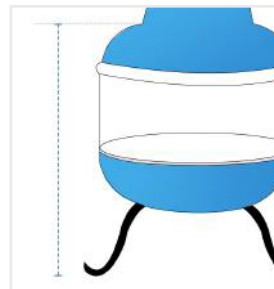
#### 1. Height:

Height of the Custom Chimney - Design 7



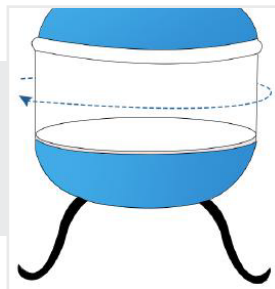
#### 2. Height till Chimney Pipe Bottom:

Height till Chimney Pipe Bottom of the Custom Chimney - Design 7



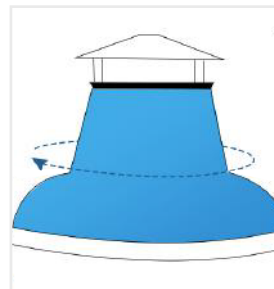
#### 3. Heat Chamber Circumference:

Heat Chamber Circumference of the Custom Chimney - Design 7



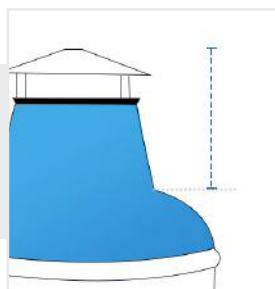
#### 4. Chimney Pipe Lower Circumference:

Chimney Pipe Lower Circumference of the Custom Chimney - Design 7



#### 5. Height of Chimney Pipe:

Height of Chimney Pipe of the Custom Chimney - Design 7



We encourage you to upload the image of the article you need the cover for - this helps our team ensure covers are designed keeping your requirements in mind.